

MSASB Trombone/ Euphonium B.C. Scales



Allegro (M.M. ♩ = c. 120)

Year 2

Chromatic Scale



C Major Scale



a melodic minor scale



SDMEA



Baritone B.C.

MIDDLE SCHOOL ALL STATE BAND AUDITION ETUDE SET II

$\bullet = 96$

f *p*

5 *mf*

9

13 *f*

SDMEA



Baritone B.C.

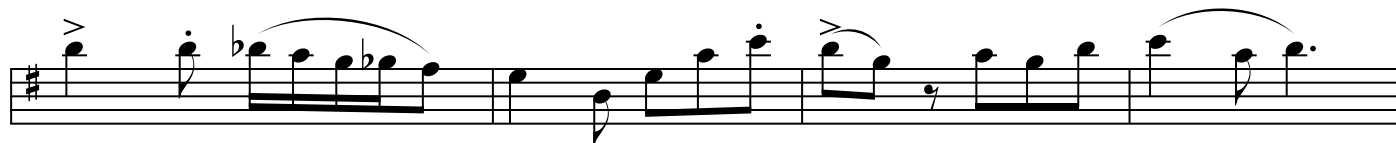
MIDDLE SCHOOL ALL STATE BAND AUDITION ETUDE - SET IIB

$\text{♩} = 60$



mf

f



5



9

p

f

p



13

